

GENERAL NOTES

ALL CONSTRUCTION SHALL BE IN ACCORDANCE WITH THE REQUIREMENTS SET FORTH BY 2003 IBC AND SHALL CONFORM TO ALL OTHER APPLICABLE MUNICIPAL, STATE, AND FEDERAL REGULATIONS INCLUDING THE ILLINOIS ACCESSIBILITY CODE (1997) AND THE AMERICANS WITH DISABILITIES ACT.

- A. GENERAL NOTES
1. ALL CONTRACTORS ARE REQUIRED TO VISIT THE SITE AND BE KNOWLEDGEABLE REGARDING EXISTING CONDITIONS AND THEIR EFFECT ON THE PROPOSED WORK. CONTRACTORS SHALL VERIFY AND BE RESPONSIBLE FOR ANY CONDITIONS REQUIRING MODIFICATION BEFORE PROCEEDING WITH THE PROJECT.
2. NOTIFY THE OWNER'S REPRESENTATIVE A MINIMUM OF 72 HOURS PRIOR TO THE INTERRUPTION OF ANY UTILITY.
3. CONTRACTORS AND SUBCONTRACTORS SHALL COORDINATE THEIR WORK WITH THAT OF OTHER TRADES.
4. NO WORK WILL BE PERMITTED TO BE INSTALLED WITHOUT RECEIPT AND SUBSEQUENT REVIEW OF FULL AND COMPLETE SUBMITTALS BY THE ARCHITECT/ENGINEER.
5. DO NOT SCALE DRAWINGS, DIMENSIONS INDICATED TAKE PRECEDENCE OVER SCALE.
6. VERIFY ALL DIMENSIONS AND ELEVATIONS IN THE FIELD. WHERE DISCREPANCIES ARE FOUND BETWEEN DIMENSIONS OR ELEVATIONS SHOWN AND ACTUAL FIELD CONDITIONS, NOTIFY ARCHITECT/ENGINEER.
7. DEFINITIONS:
7.1. FURNISH: SUPPLY, DELIVER TO AND UNLOAD AT PROJECT SITE READY FOR ASSEMBLY AND INCORPORATION INTO THE WORK.
7.2. INSTALL: AT THE PROJECT SITE, UNPACK/UNCRATE ASSEMBLY, PLACE, ANCHOR, FINISH, PROTECT, CLEAN, AND PERFORM ALL OTHER SIMILAR OPERATIONS REQUIRED TO FULLY AND PROPERLY INCORPORATE AN ITEM INTO THE WORK. LEGALLY DISPOSE OF OR RECYCLE PACKAGING AND EXTRA MATERIAL OFF-SITE.
7.3. PROJECT SITE: THE SPACE AVAILABLE TO THE CONTRACTOR FOR PERFORMANCE OF CONSTRUCTION ACTIVITIES. THE EXTENT OF THE PROJECT SITE IS THE AREAS TO BE REMODELED AS INDICATED ON THE DRAWINGS, AND EXTENDS TO SUCH AREAS AS CONTAIN TERMINATIONS FOR POWER, DATA AND OTHER SERVICES.
7.4. OFF-SITE: OUTSIDE THE PROPERTY IN WHICH THE PROJECT SITE IS LOCATED.
7.5. PROVIDE: FURNISH AND INSTALL, AS DEFINED ABOVE.
8. WHERE CONFLICTS MAY EXIST BETWEEN THE REQUIREMENTS OF PORTIONS OF THE CONTRACT DOCUMENTS, THE GREATER QUANTITY, HIGHER QUALITY OR MORE STRINGENT REQUIREMENT SHALL GOVERN. THEREFORE, BY EXECUTING A CONTRACT FOR CONSTRUCTION, THE CONTRACTOR AGREES THAT THE DRAWINGS SET FORTH THE DESIGN INTENT AND, THEREFORE, MAY NOT EXPRESSLY DEPICT EVERY LENGTH, SEGMENT, PIECE, PART, COMPONENT OR UNIT OF A PRODUCT, SYSTEM OR SERVICE. THE CONTRACTOR FURTHER AGREES THAT, AS PART OF ITS BID, IT MUST FURNISH AND INSTALL EVERY LENGTH, SEGMENT, PIECE, PART, COMPONENT OR UNIT OF A PRODUCT, SYSTEM OR SERVICE AND, CONSEQUENTLY, THE CONTRACTOR IS NOT ENTITLED TO ANY ADDITIONAL COMPENSATION FOR ANY LENGTH, SEGMENT, PIECE, PART COMPONENT OR UNIT OF A PRODUCT, SYSTEM OR SERVICE BECAUSE IT IS NOT EXPRESSLY DEPICTED HEREIN.
9. THE CONTRACT DOCUMENTS REQUIRE THE CONTRACTOR TO FURNISH AND INSTALL COMPLETE PRODUCTS, SYSTEMS AND SERVICES. BY EXECUTING A CONTRACT FOR CONSTRUCTION, THE CONTRACTOR AGREES THAT THE DRAWINGS SET FORTH THE DESIGN INTENT AND, THEREFORE, MAY NOT EXPRESSLY DEPICT EVERY LENGTH, SEGMENT, PIECE, PART, COMPONENT OR UNIT OF A PRODUCT, SYSTEM OR SERVICE AND, CONSEQUENTLY, THE CONTRACTOR IS NOT ENTITLED TO ANY ADDITIONAL COMPENSATION FOR ANY LENGTH, SEGMENT, PIECE, PART COMPONENT OR UNIT OF A PRODUCT, SYSTEM OR SERVICE BECAUSE IT IS NOT EXPRESSLY DEPICTED HEREIN.
10. ARCHITECT SHALL BE NAMED AS ADDITIONAL INSURED ON ALL REQUIRED INSURANCE POLICIES.

- B: MISCELLANEOUS AND DEMOLITION NOTES
1. DEFINITIONS:
1.1. DEMOLISH: DISCONNECT FROM SERVICES, UNFASTEN, REMOVE, DISASSEMBLE AND LEGALLY DISPOSE OF OR RECYCLE OFF-SITE.
1.2. SALVAGE: CAREFULLY, SO AS TO PRESERVE INTEGRITY AND USEFULNESS, DISCONNECT FROM SERVICES, UNFASTEN, REMOVE, DISASSEMBLE IF NECESSARY, AND STORE TEMPORARILY FOR REINCORPORATION INTO THE WORK OR FOR DELIVERY/TURN-OVER TO THE OWNER AS INDICATED IN THE CONSTRUCTION DOCUMENTS.
1.3. SALVAGE IN PLACE: PROTECT, RE-USE, CLEAN, RE-CONDITION IF NECESSARY, REFINISH IF INDICATED IN THE DRAWINGS, EXISTING INSTALLED ITEM/COMPONENT WITHOUT DISCONNECTING, UNFASTENING OR REMOVING FROM THE WORK.
2. COORDINATE PENETRATIONS AND/OR SLEEVES REQUIRED IN WALLS, FLOORS, CEILINGS OR ROOFS FOR MECHANICAL AND ELECTRICAL WORK REQUIRED BY ARCHITECTURAL, MECHANICAL, ELECTRICAL, AND PLUMBING DRAWINGS.
2. SEAL WITH UL APPROVED MATERIALS PENETRATIONS OF DUCTWORK, CONDUIT AND PIPES THROUGH FIRE-RATED ASSEMBLIES, TO MAINTAIN THE RATING INTEGRITY OF THOSE ASSEMBLIES. PROVIDE FIRE DAMPERS AS INDICATED ON THE DRAWINGS.
3. SEAL WITH ACOUSTICAL SEALANT PENETRATIONS OF DUCTWORK, CONDUIT AND PIPES THROUGH NON-RATED FLOORS, FULL-HEIGHT WALLS/PARTITIONS, ACOUSTICALLY INSULATED WALLS/PARTITIONS, AND SOUND-RATED WALLS/PARTITIONS, TO MAINTAIN THE ACOUSTICAL INTEGRITY OF THOSE ASSEMBLIES.
4. APPLY APPROPRIATE & COMPATIBLE SEALANT MATERIALS AS REQUIRED TO SEPARATE DISSIMILAR METALS, FILL GAPS IN EXISTING ASSEMBLIES OR WHERE NEW AND EXISTING ASSEMBLIES MEET OR WHERE OTHERWISE REQUIRED BY THE SPECIFICATIONS.
5. BRING ANY UNFORESEEN OR CONFLICTING CONDITIONS TO THE IMMEDIATE ATTENTION OF THE ARCHITECT/ENGINEER BEFORE PROCEEDING WITH THE WORK.
6. REPAIR, PATCH, OR REPLACE FINISH MATERIALS OR VISIBLE ASSEMBLIES THAT ARE SOILED, CUT OR DAMAGED IN ANY FASHION DURING THE COURSE OF THE WORK. PERFORM PATCHING SUCH THAT EDGES BLEND INTO CONTIGUOUS SURFACES SMOOTHLY, MATCHING TEXTURE AND COLOR OF ADJACENT SURFACES.
7. OWNER WILL CONTINUE TO OCCUPY AREAS ADJACENT TO THE PROJECT AREAS DURING THE CONSTRUCTION PERIOD. COORDINATE WITH OWNER TO MINIMIZE CONFLICT AND TO FACILITATE OWNER'S OPERATIONS. LIMIT CONDUCT OF ESPECIALLY NOISY OR DISRUPTIVE WORK TO ONLY THOSE TIMES MUTUALLY AGREED TO BY OWNER. REQUEST MUTUALLY AGREEABLE TIME FROM OWNER PRIOR TO CONDUCTING SUCH WORK, AND PROCEED WITH SUCH WORK ONLY AFTER RECEIVING OWNER'S EXPRESS PERMISSION TO DO SO.

- C: BIDDING NOTES
1. GENERAL CONTRACTOR TO PROVIDE A \$5,000 ALLOWANCE IN HIS/HER BID FOR UNFORESEEN/MISCELLANEOUS CONDITIONS. WHEN FIGURING THIS ALLOWANCE IN THE BID, CONTRACTOR IS TO INCLUDE ALL NECESSARY OVERHEAD AND PROFIT. THIS ALLOWANCE IS NOT FOR THE CONTRACTOR'S BENEFIT, AND IS ONLY AUTHORIZED TO CHARGE AGAINST THIS ALLOWANCE WHEN DIRECTED AND APPROVED BY JOLIET JUNIOR COLLEGE. THE CONTRACTOR WILL BE ALLOWED TO INVOICE FOR MATERIAL AND RAW LABOR COST ONLY.
2. CONSTRUCTION SCHEDULE:
START: MAY 26, 2014
COMPLETE: JUNE 30, 2014

STANDARD ABBREVIATIONS

Table with 3 columns of abbreviations and their corresponding full names. Includes terms like AT (Anchor Bolt), EXP (Expansion), PL (Plate), etc.

DRAFTING MATERIALS LEGEND

Table showing symbols for detail numbers, keynotes, insulation, blocking, and other drafting materials.



PROJECT JOLIET JUNIOR COLLEGE - PROSTHETICS LAB DUST COLLECTION SYSTEM - T BUILDING
JJC PROJECT NO. JJC-14-604
OWNER JOLIET JUNIOR COLLEGE
1215 HOUBOLT ROAD
JOLIET, IL 60431

ARCHITECT/ ENGINEER KLUBER, INC.
10 S. SHUMWAY AVE.
BATAVIA, ILLINOIS 60510
TEL 630-406-1213
FAX 630-406-9472
www.kluberinc.com

SEALS & CERTIFICATES

Three rectangular boxes for Architect's Seal, Mechanical Engineer's Seal, and Electrical Engineer's Seal. Includes a text block for the seal content and a signature line.

INDEX OF DRAWINGS

- G100 COVER SHEET, GENERAL NOTES, SYMBOLS, & DRAWING INDEX
M310 T-BUILDING PARTIAL FIRST FLOOR PLAN



Kluber, Inc.
Batavia, Illinois 60510
Tel. 630-406-1213
Gurnee, Illinois 60031
Tel. 847-236-3626
www.kluberinc.com

PROSTHETICS LAB DUST COLLECTION SYSTEM

JOLIET JUNIOR COLLEGE
1215 HOUBOLT ROAD
JOLIET, ILLINOIS 60431

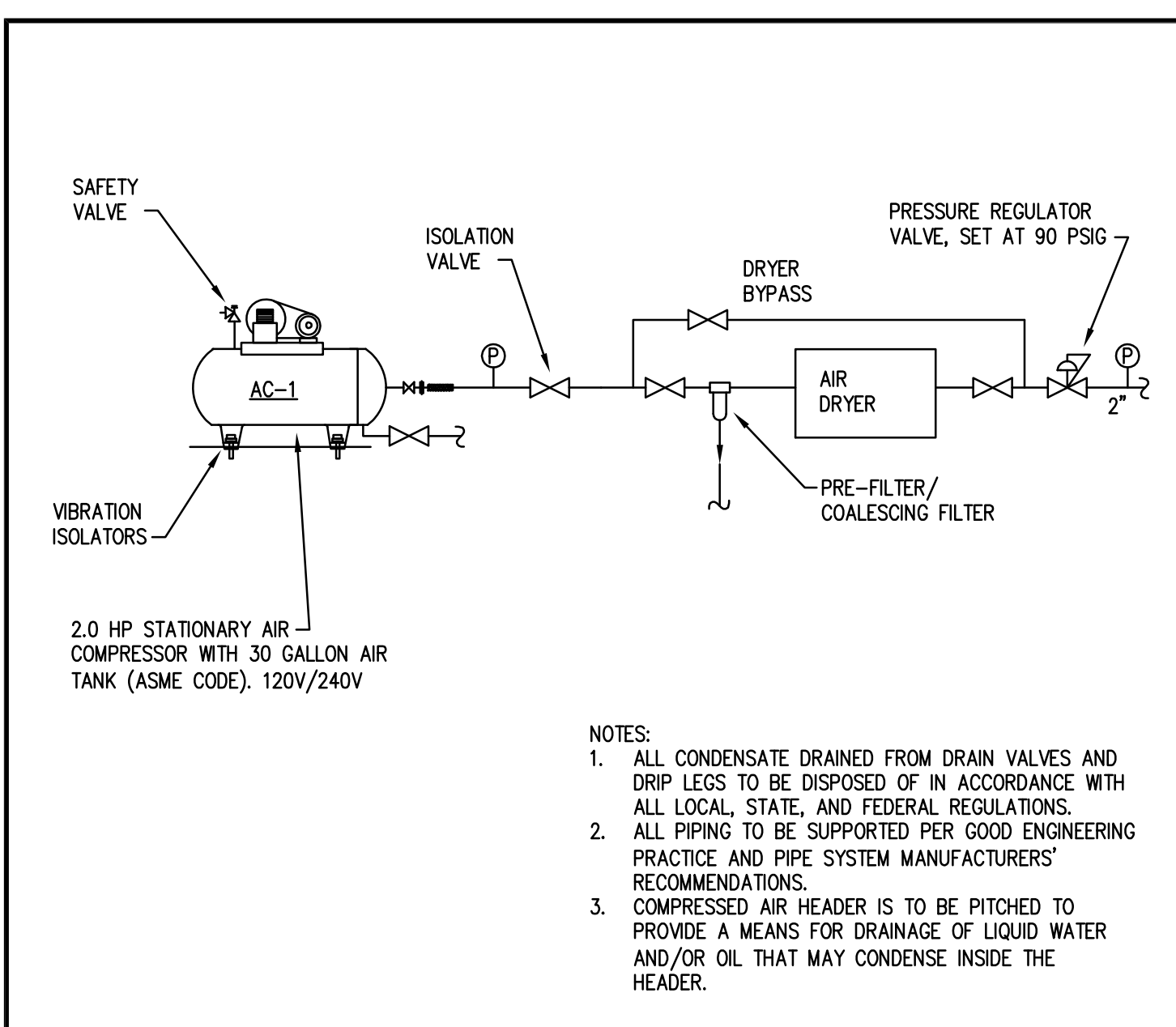
Table with 2 columns: ISSUED, DATE. For tracking document revisions.

JOB NO. 13-292-449
DRAWN JMB
CHECKED JMB
APPROVED JMB

SHEET TITLE
COVER SHEET

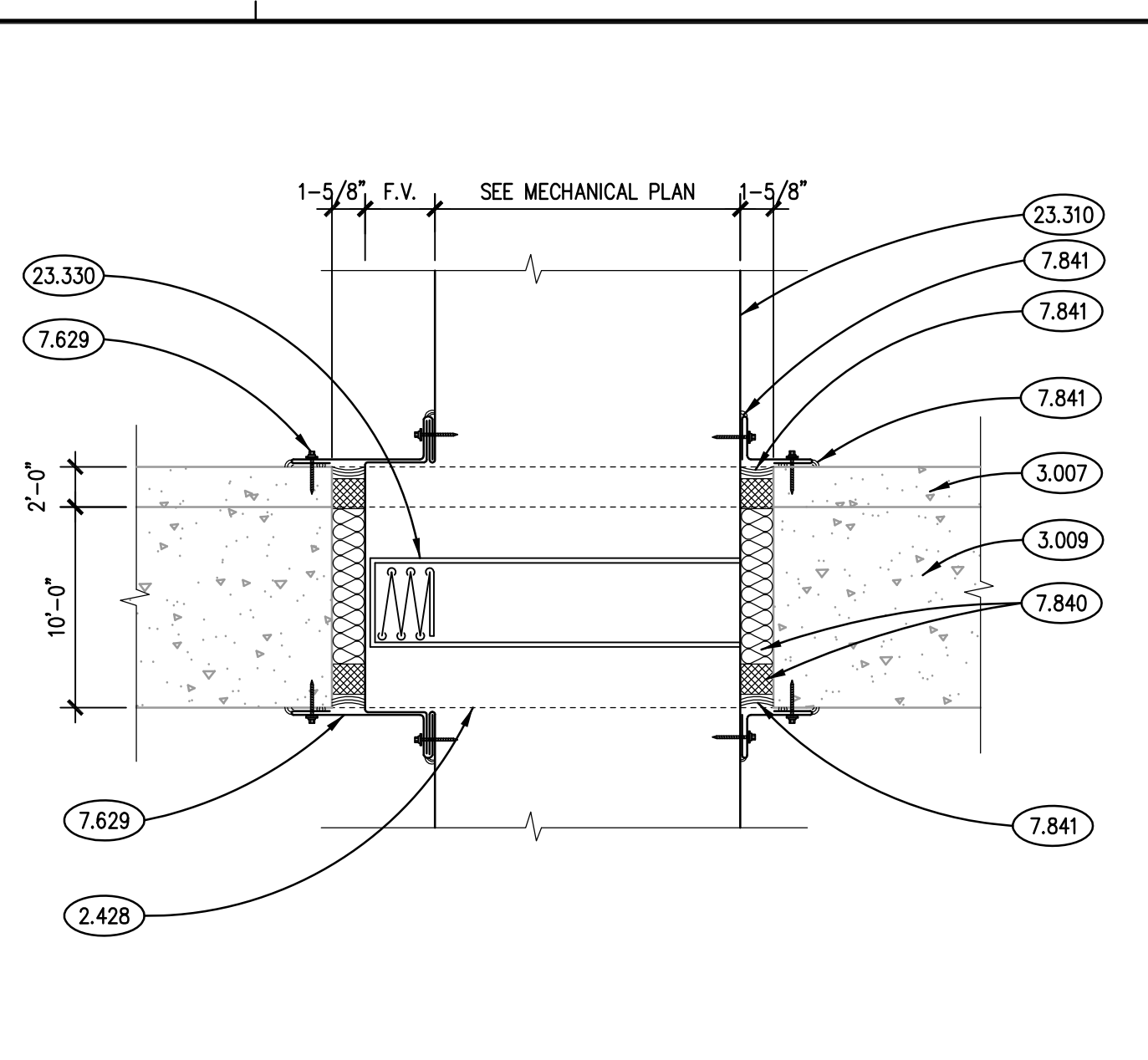
SHEET NUMBER

G100

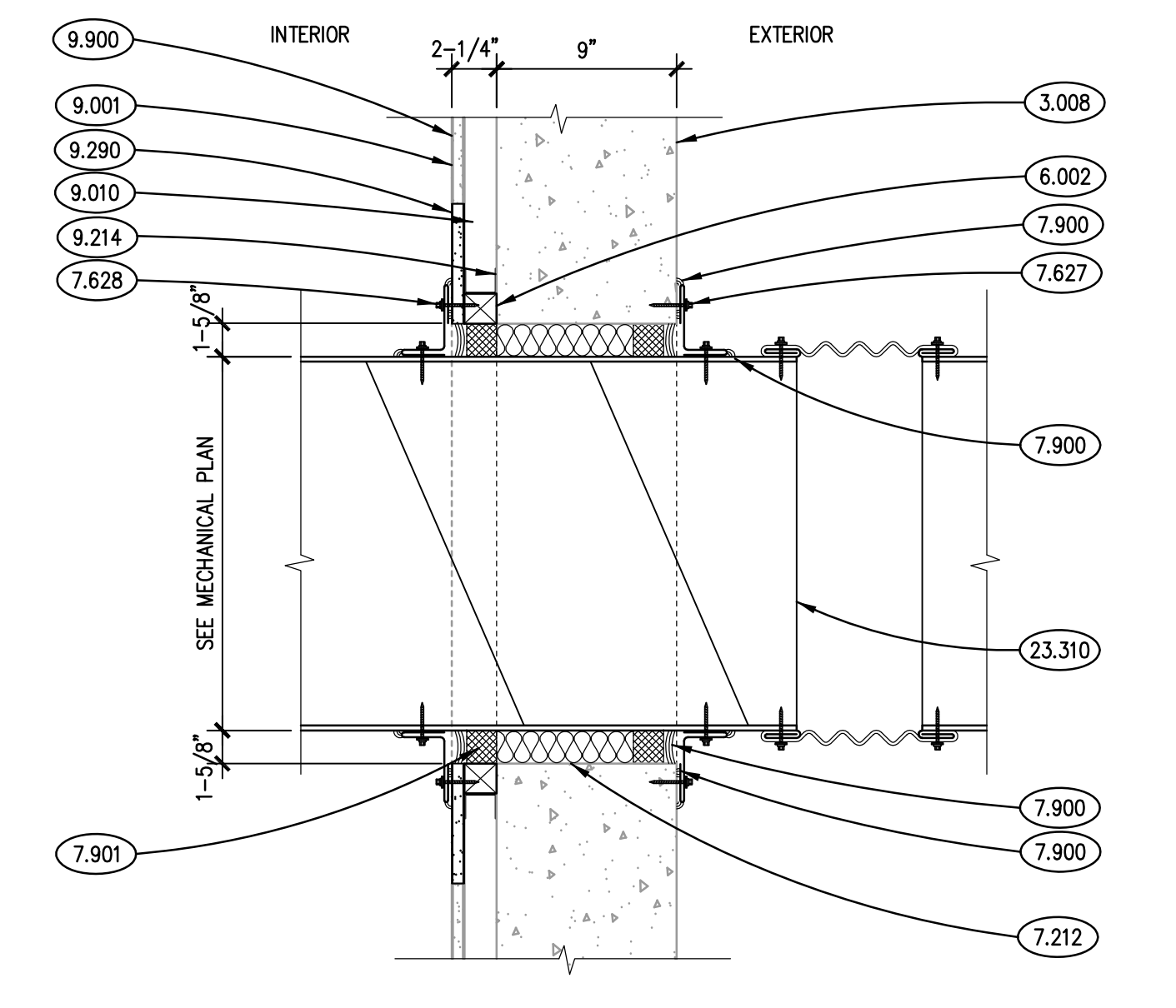


- NOTES:
1. ALL CONDENSATE DRAINED FROM DRAIN VALVES AND DRIP LEES TO BE DISPOSED OF IN ACCORDANCE WITH ALL LOCAL, STATE, AND FEDERAL REGULATIONS.
 2. ALL PIPING TO BE SUPPORTED PER GOOD ENGINEERING PRACTICE AND PIPE SYSTEM MANUFACTURERS' RECOMMENDATIONS.
 3. COMPRESSED AIR HEADER IS TO BE PITCHED TO PROVIDE A MEANS FOR DRAINAGE OF LIQUID WATER AND/OR OIL THAT MAY CONDENSE INSIDE THE HEADER.

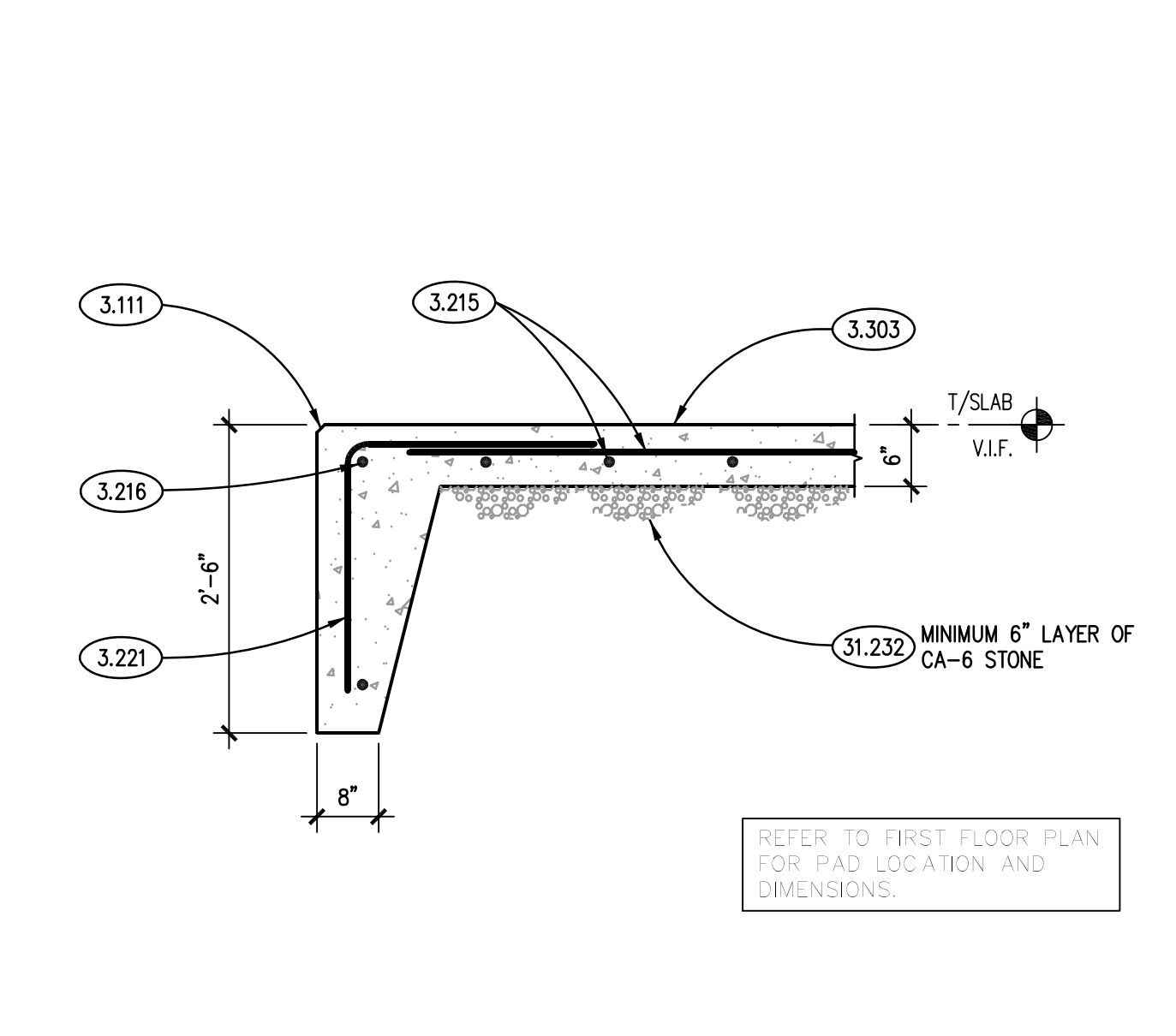
COMPRESSED AIR SYSTEM DETAILS SCALE: NTS **7**



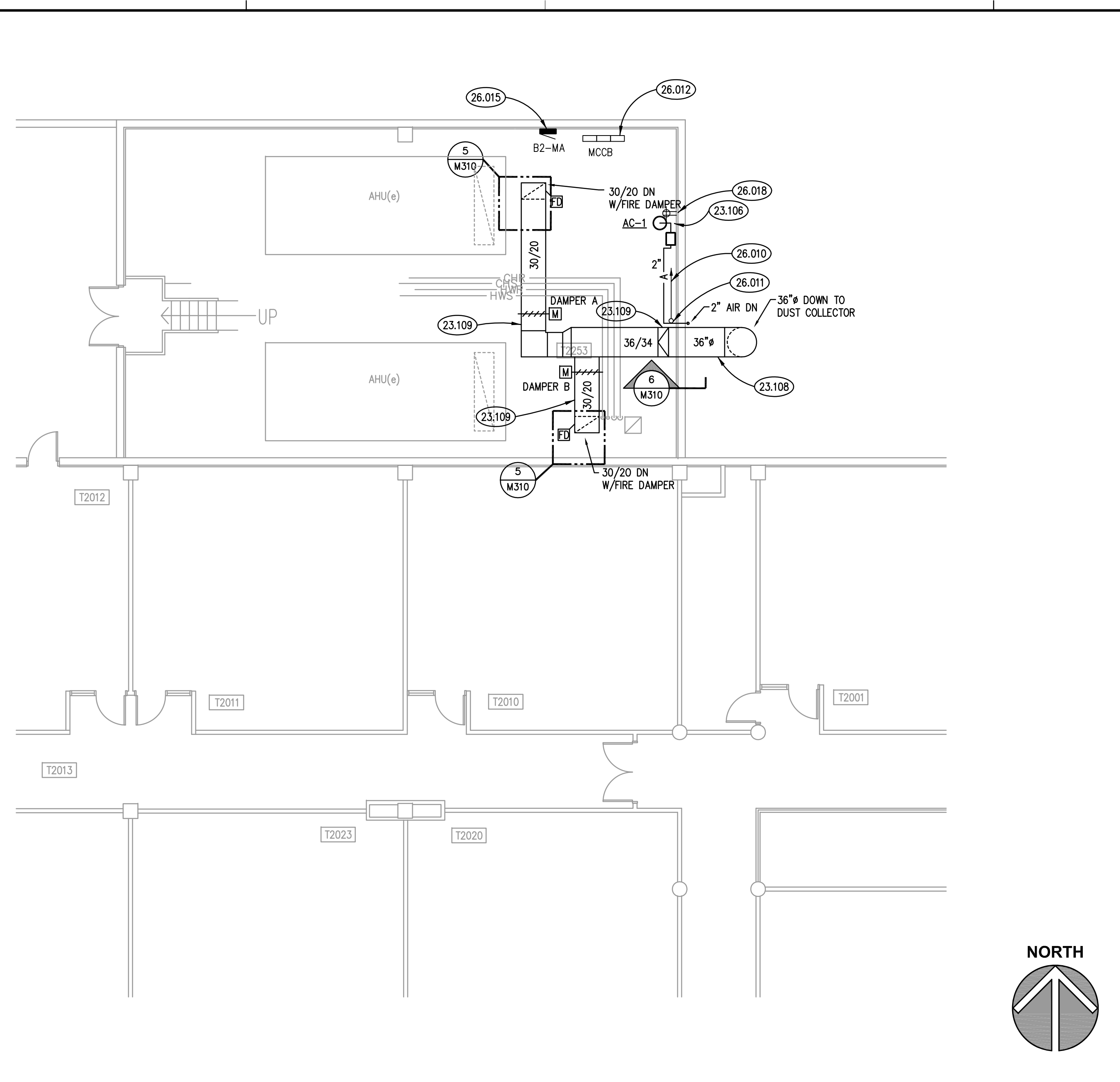
TYP. RATED FLOOR PENETRATION SCALE: 1-1/2\"/>



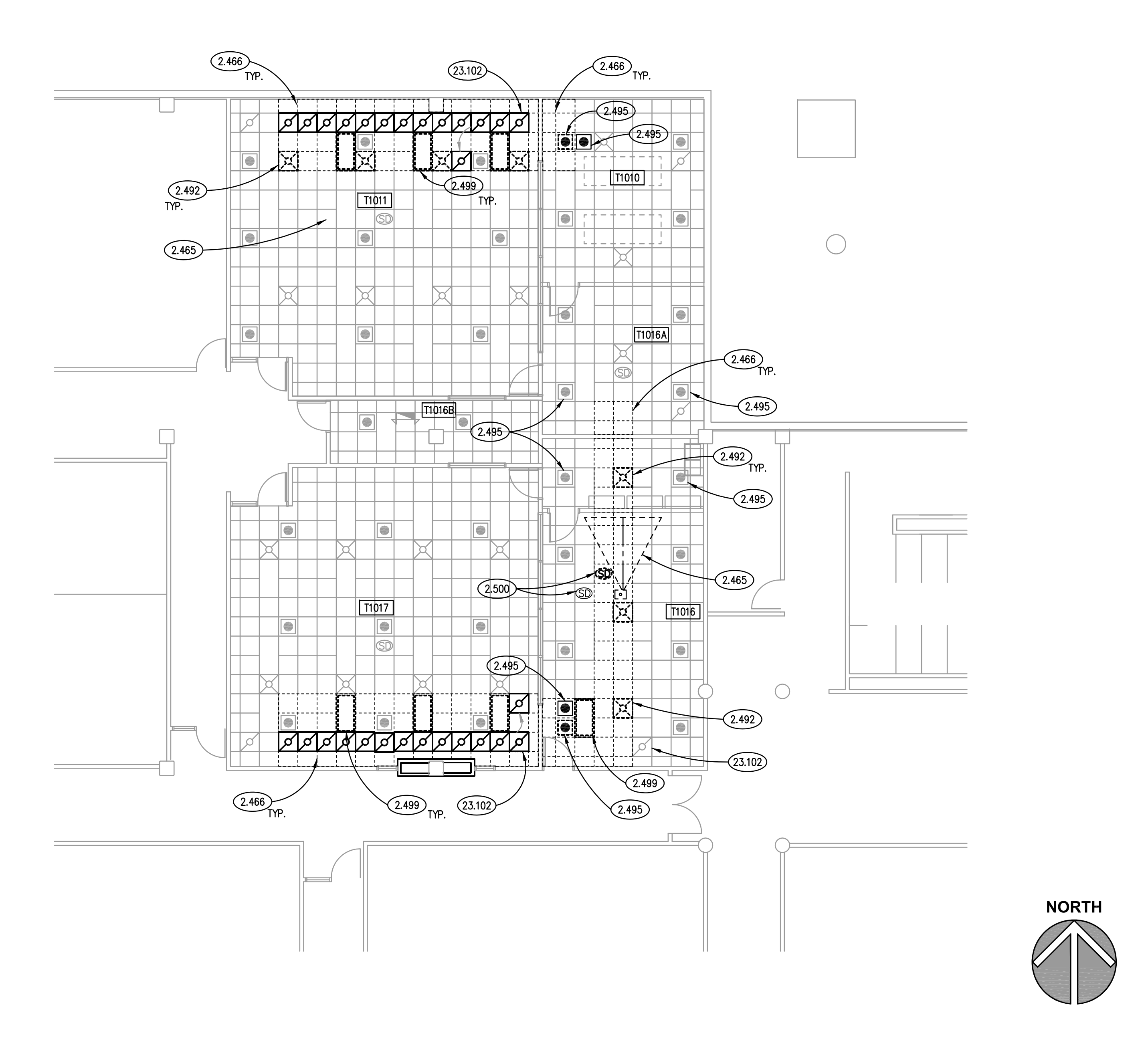
TYPICAL WALL PENETRATION SCALE: 1-1/2\"/>



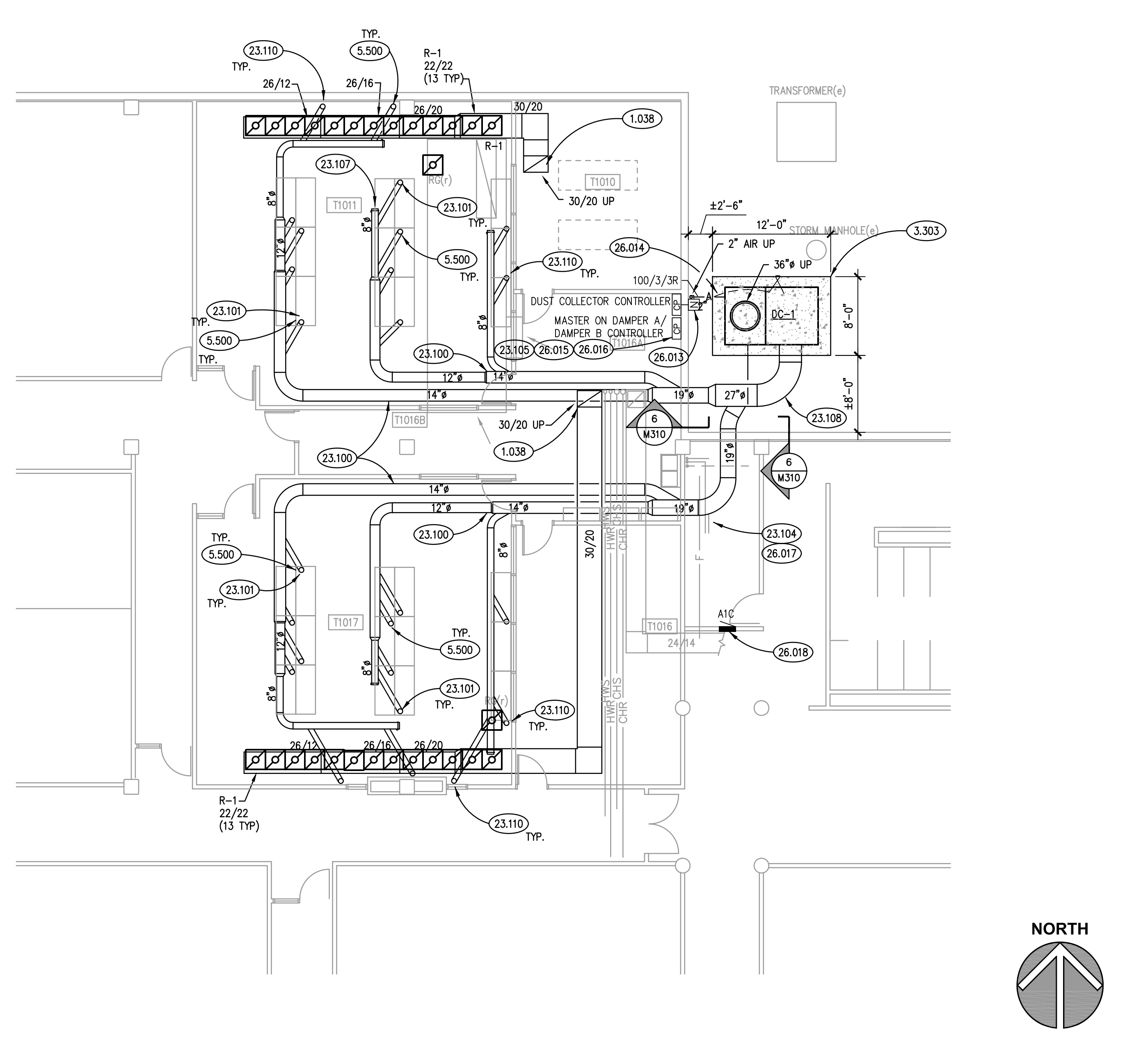
TYPICAL EXTERIOR PAD SCALE: 3/4\"/>



PARTIAL SECOND FLOOR PLAN SCALE: 1/8\"/>



PARTIAL FIRST FLOOR CEILING PLAN SCALE: 1/8\"/>



PARTIAL FIRST FLOOR MECHANICAL PLAN SCALE: 1/8\"/>

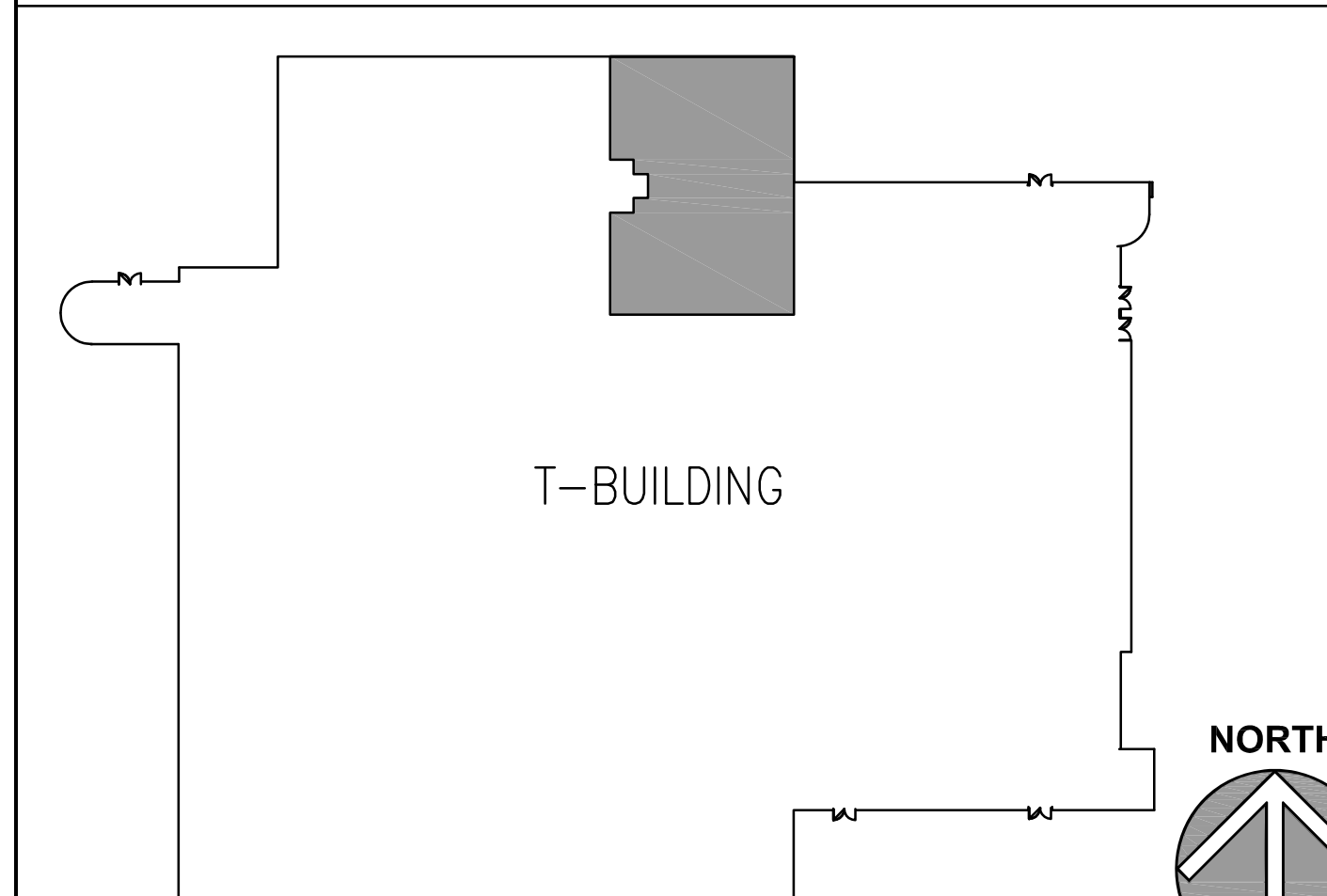
KEYNOTES

- 1.000 KEYNOTES TYPICALLY ARE NOT DUPLICATED WITHIN A GIVEN DETAIL. CONTRACTOR IS TO ASSUME THAT AN UN-KEYED ITEM IS TO BE THE SAME AS THE KEYPED ITEM WITHIN THE SAME DETAIL.
- 1.038 CONTRACTOR TO SAWCUT PORTION OF EXISTING SLAB AS REQUIRED TO INSTALL NEW OPENING. PROVIDE ROUND HOLES IN CORNERS TO PREVENT SAWBLADE OVERRUN.
- 2.428 SAWCUT AND REMOVE A PORTION OF THE EXISTING PRECAST CONCRETE FLOOR SUPERSTRUCTURE. SAWCUTS MUST NOT EXTEND PAST THE OPENING CORNERS. CORE DRILL FOUR CORNERS PRIOR TO SLAB CUTTING. COORDINATE FINAL SAWCUT LOCATIONS WITH MECHANICAL CONTRACTOR AND A/E STRUCTURAL ENGINEER BEFORE PROCEEDING WITH WORK.
- 2.465 DEMOLISH EXISTING INTERIOR SPECIALTY AND DELIVER TO OWNER. LCD PROJECTOR AND SUPPORT. OWNER WILL RE-INSTALL AFTER ABOVE CEILING DUCTWORK IS INSTALLED AND ACoustICAL CEILING GRID HAS BEEN COMPLETED.
- 2.466 DEMOLISH EXISTING INTERIOR CEILING FINISH: ACoustICAL PANELS AND SUSPENDED GRID TO ACCOMMODATE ABOVE CEILING DUCTWORK PLACEMENT AND SUSPENSION HANGERS. INSTALL NEW GRID TO MATCH EXISTING AND RE-INSTALL EXISTING ACoustICAL CEILING TILES.
- 2.492 DEMOLISH EXISTING MECHANICAL SYSTEM COMPONENT: CEILING DIFFUSER/GRILLE AND RE-INSTALL AFTER ABOVE CEILING DUCTWORK PLACEMENT AND CEILING GRID HAS BEEN RE-INSTALLED.
- 2.495 DEMOLISH EXISTING FIRE PROTECTION HEAD AND RELOCATE TO NEW LOCATION TO AVOID CONFLICTS WITH NEW DUCTWORK MAINS OR TO ADJUST SPRINKLER LOCATION TO AVOID DUCTWORK OBSTRUCTION. LOCATE IN ACCORDANCE WITH NFPA 13.
- 2.499 DEMOLISH EXISTING LIGHT FIXTURE TO ALLOW FOR ABOVE CEILING DUCTWORK PLACEMENT. RE-INSTALL EXISTING FIXTURE AFTER DUCTWORK PLACEMENT AND CEILING GRID RESTORATION IS COMPLETE.
- 2.500 DEMOLISH EXISTING SMOKE DETECTOR TO ALLOW FOR ABOVE CEILING DUCTWORK PLACEMENT AND RELOCATE TO AREA SHOWN.
- 3.007 EXISTING CONCRETE FLOOR TOPPING.
- 3.008 EXISTING PRECAST CONCRETE WALL PANELS. COORDINATE OPENING THROUGH PANEL WITH MECHANICAL CONTRACTOR AND A/E STRUCTURAL ENGINEER PRIOR TO PROCEEDING WITH OPENING CUT.
- 3.009 EXISTING PRECAST CONCRETE FLOOR PLANKS. COORDINATE OPENING THROUGH FLOOR PLANKS WITH MECHANICAL CONTRACTOR AND A/E STRUCTURAL ENGINEER PRIOR TO PROCEEDING WITH OPENING CUT.
- 3.111 CONCRETE FORMING: SAID ACCESSORIES: CONTINUOUS 3/4\"/>
- 3.215 CONCRETE REINFORCING: REINFORCING STEEL MAT, #5 @ 12\"/>
- 3.216 CONCRETE REINFORCING: CONTINUOUS REINFORCING BAR, #5 U.L.O. QUANTITY AS DEPICTED.
- 3.221 CONCRETE REINFORCING: #4 DOWELS @ 1'-0\"/>
- 3.303 CAST-IN-PLACE CONCRETE: EXTERIOR SLAB-ON-GRADE. REFER TO SPECIFICATIONS FOR MIX TYPE AND FINISH. REINFORCE WITH W/F-6#6 W2.1 x W2.1. SLOPE AWAY FROM BUILDING. ELEVATION AT DOOR AT MATCH INTERIOR SLAB/FINISH FLOOR ELEVATION. SLAB TO BE 5\"/>
- 5.500 METAL FABRICATION: PROVIDE UNISTRUT FRAMING SYSTEM AS REQUIRED TO SUPPORT NEW DUST COLLECTION ARM SYSTEM. ANCHOR FRAMING TO TOP OF EXISTING DESK TOP AND ANCHOR TO UNDERSIDE OF EXISTING PRECAST FLOOR FRAMING ABOVE. ANCHOR TO WALL AT APPLICABLE LOCATIONS.
- 6.002 WOOD BLOCKING: DIMENSIONAL LUMBER; SIZE AS REQUIRED; REFER TO SPECIFICATIONS FOR TREATMENT.
- 7.212 INSULATION: THERMAL BATT; THICKNESS TO FILL CAVITY, UNLESS INDICATED OTHERWISE.
- 7.627 PREFINISHED CONCRETE ANCHORS WITH NEOPRENE WASHERS SPACED AT 6 INCHES O.C. MATCH DARK BRONZE PAINTED SHEET METAL COLOR. TYPICAL.
- 7.628 PREFINISHED WOOD ANCHORS WITH NEOPRENE WASHERS SPACED AT 6 INCHES O.C. MATCH DARK BRONZE PAINTED SHEET METAL COLOR. TYPICAL.
- 7.629 SHEET METAL ANCHORS: SIZED AS REQUIRED TO SUPPORT DUCTWORK LOAD SPACED AT MAX. 8 INCHES O.C. PROVIDE 14 GAUGE CONTINUOUS METAL CLEAT AT PERIMETER OF DUCTWORK TO SUPPORT DUCTWORK AT FLOOR LINE. TYPICAL.
- 7.840 FIRESTOPPING: PACKING MATERIAL; REFER TO SPECIFICATIONS
- 7.841 FIRESTOPPING: SEALANT; REFER TO SPECIFICATIONS.
- 7.900 JOINT SEALANT: REFER TO SPECIFICATIONS; PROVIDE BACKER ROD OR BOND BREAKER.
- 7.901 SELF EXPANDING JOINT SEALANT. EMSEAL OR EQUIVALENT WITH 400% EXPANSION CAPABILITY; 2 INCHES WIDE MINIMUM. TYPICAL AT PERIMETER OF ALL DUCTS.
- 9.001 EXISTING DRYWALL CONSTRUCTION.
- 9.010 EXISTING METAL STUD FRAMING: 1-5/8\"/>
- 9.214 METAL STUD FRAMING: STUD RUNNER; SIZE TO MATCH METAL STUDS.
- 9.290 GYPSUM BOARD: 5/8\"/>
- 9.900 REPAINT ENTIRE WALL SURFACE WITH ONE COAT LATEX PRIMER AND TWO COATS OF LATEX PAINT TO MATCH EXISTING WALL COLOR AND FINISH. TYPICAL AT ALL EXISTING WALL WITH NEW DUCTWORK PENETRATIONS WHERE PAINTED.
- 23.100 PROVIDE EXHAUST AIR DUCTWORK BELOW AND AS TIGHT TO LAY-IN CEILING AS POSSIBLE.
- 23.101 PROVIDE 6 INCH TAKE-OFF AND CONNECTION TO EXTRACTION ARMS.
- 23.102 REMOVE AND RELOCATE CEILING GRILLE OPEN TO PLENUM TO NEW LOCATION. REPLACE WITH CEILING TILE FROM RELOCATED GRILLE LOCATION.
- 23.104 REMOVE AND RELOCATE WATER PIPES, SPRINKLER PIPES OR DUCTWORK IN JANITOR CLOSET TO AVOID CONFLICT WITH NEW EXHAUST DUCT ROUTING.
- 23.105 DAMPER SWITCH SHALL BE ACTIVATED FOR ROOMS THAT WILL BE USING DUST COLLECTION SYSTEM. PROVIDE PLASTIC NAMEPLATE "ACTIVATED SWITCH FOR ROOM (R)" WHEN DUST COLLECTOR IS ACTIVATED".
- 23.106 PROVIDE AIR COMPRESSOR AND AIR DRYER AND PIPE TO DUST COLLECTOR. REFER TO DETAIL 7 FOR REQUIRED COMPONENTS.
- 23.107 BLAST GATE AT END OF BRANCH DUCT FOR MINIMUM AIRFLOW BALANCING (TYP OF SEVEN).
- 23.108 PROVIDE INSULATION AND ALUMINUM JACKET ON EXTERIOR DUCTWORK.
- 23.109 PROVIDE DUCTWORK BRANCHES AS HIGH AS POSSIBLE IN MECHANICAL ROOM.
- 23.110 PROVIDE 6 INCH TAKE-OFF AND CONNECTION TO EXTRACTION ARMS. MOUNT ARM TO WALL. COORDINATE EXACT LOCATION WITH OWNER.
- 23.310 MECHANICAL DUCT: REFER TO MECHANICAL DRAWINGS.
- 23.330 MECHANICAL DUCT ACCESSORY: FIRE DAMPER; REFER TO MECHANICAL DRAWINGS.
- 26.010 PROVIDE NEW FEEDER FOR DUST COLLECTOR 3#3, #8S, 1 1/4\"/>
- 26.011 ROUTE DOWN TO DUST COLLECTOR CONTROL PANEL.
- 26.012 PROVIDE NEW 100/3 AMPERE FUSIBLE SECTION AT "MCCB" WITH 100 AMP FUSES, HORSEPOWER RATED.
- 26.013 PROVIDE 100 AMPERE, 3 POLE, HEAVY DUTY NON-FUSED DISCONNECT, NEMA 3R.
- 26.014 PROVIDE GRS CONDUIT WITH LIQUID-TIGHT FLEXIBLE CONDUIT AT DUST COLLECTOR.
- 26.015 PROVIDE NEW 20(A) BREAKER AT PANELBOARD B2-MA FOR DAMPER CONTROLLER AND AIR COMPRESSOR. PROVIDE NEW 2#12, #12, 1/2\"/>
- 26.016 DUST COLLECTOR ON/OFF, DAMPER A OPEN/CLOSE, DAMPER B OPEN/CLOSE MANUAL SINGLE POLE SWITCH, 3 GANG NEMA 1 ENCLOSURE. COORDINATE WITH OWNER FOR EXACT LOCATION.
- 26.017 REMOVE AND RELOCATE LIGHT FIXTURES IN JANITOR CLOSET AS REQUIRED FOR DUCTWORK CONFLICT.
- 26.018 PROVIDE DUPLEX RECEPTACLE, 48" AFF AND DEDICATED CIRCUIT, 2#12, #12, 1/2\"/>
- 31.232 EXCAVATION FILL: ENGINEERED GRANULAR FILL OVER EXISTING CLAY SOIL. CONTRACTOR TO ASSUME NEED TO REMOVE AND DISPOSE OF 18\"/>

GENERAL NOTES

1. REFER TO DRAWING G100 FOR PROJECT GENERAL NOTES.
2. ALL PIPING AND DUCTWORK IS SHOWN DIAGRAMMATICALLY AND DOES NOT SHOW ALL REQUIRED FITTINGS, OFFSETS, DROPS AND RISERS. THE CONTRACTOR IS RESPONSIBLE TO PROVIDE ALL MATERIAL AND LABOR FOR A COMPLETE AND WORKING SYSTEM. COORDINATE WITH OTHER TRADES FOR SPACE AVAILABLE AND RELATIVE LOCATIONS OF EQUIPMENT, PIPING, DUCTWORK, ETC.
3. SPACE ALLOCATION, COORDINATION WITH ELECTRICAL, ARCHITECTURAL & OTHER MECHANICAL COMPONENTS HAVE BEEN MADE WITH RESPECT TO ALL EQUIPMENT SCHEDULED ON THESE DRAWINGS AND IN THE SPECIFICATIONS OF THE FIRST NAMED MANUFACTURER ONLY. OTHER MANUFACTURERS ARE ACCEPTABLE PROVIDED THEY MEET PERFORMANCE REQUIREMENTS AND AFOREMENTIONED COORDINATION.

KEYPLAN



ISSUED	
BID DOCUMENTS	
02/21/14	

JOB NO.	13-292-840
DRAWN	DDW
CHECKED	DDW
APPROVED	DDW

SHEET TITLE	T-BUILDING PARTIAL FLOOR PLAN
SHEET NUMBER	M310